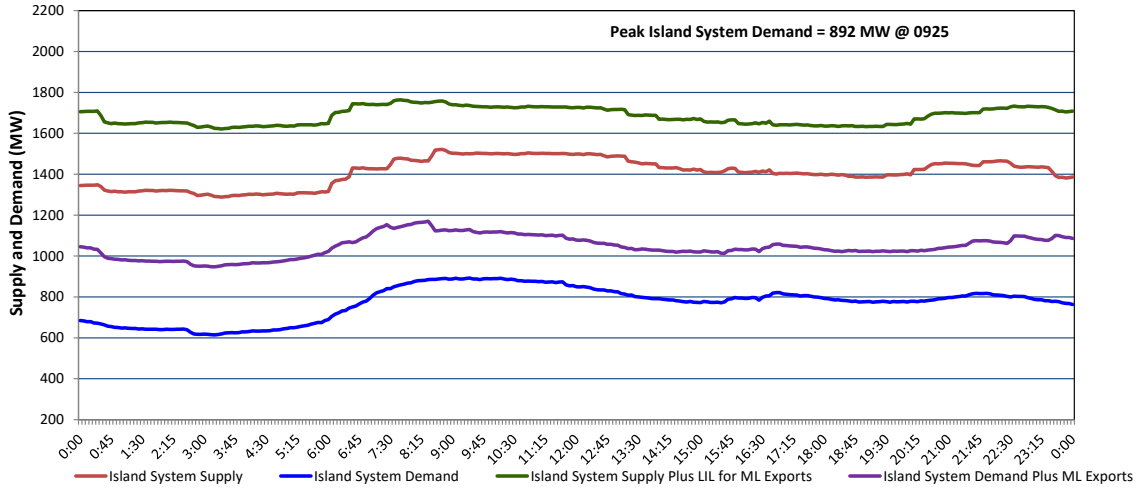


**Newfoundland Labrador Hydro (NLH)  
Supply and Demand Status Report Filed Monday, June 15, 2026**

**Section 1  
Island Interconnected System - Supply, Demand & Exports  
Actual 24 Hour System Performance For Friday, June 12, 2026**



**Island Supply Notes For June 12, 2026**

- A As of 1326 hours, February 05, 2026, Cat Arm Unit 2 available at 57 MW due to forced derating (67 MW).
- B As of 0800 hours, March 29, 2026, Holyrood Unit 3 unavailable due to planned outage (150 MW).
- C As of 1513 hours, April 16, 2026, St. Anthony Diesel Plant available at 7.7 MW due to forced derating (9.7 MW).
- D As of 0800 hours, May 06, 2026, Holyrood Unit 2 unavailable due to planned outage 40 MW (170 MW).
- E As of 0701 hours, May 24, 2026, Holyrood Unit 1 unavailable due to planned outage 166 MW (170 MW).
- F As of 0841 hours, May 24, 2026, Hinds Lake Unit unavailable due to planned outage (75 MW).
- G **At 1700 hours, June 12, 2026, Bay d'Espoir Unit 2 unavailable due to forced extension to planned outage (76.5 MW).**
- H **At 2006 hours, June 12, 2026, Stephenville Gas Turbine available at full capacity (50 MW).**

**Section 2  
Island Interconnected System - Supply, Demand & Outlook**

Sat, Jun 13, 2026	Island System Outlook <sup>2</sup>	Seven-Day Forecast	Island System Daily Peak Demand (MW)	
			Forecast <sup>8</sup>	Adjusted <sup>6</sup>
Island System Supply: <sup>4</sup>	1,350 MW	Saturday, June 13, 2026	905	855
NLH Island Generation: <sup>3,7</sup>	965 MW	Sunday, June 14, 2026	895	845
NLH Island Power Purchases: <sup>5</sup>	105 MW	Monday, June 15, 2026	915	865
NP and CBPP Owned Generation:	215 MW	Tuesday, June 16, 2026	870	820
LIL/ML Net Imports to Island: <sup>9</sup>	65 MW	Wednesday, June 17, 2026	910	860
7-Day Island Peak Demand Forecast:	915 MW	Thursday, June 18, 2026	850	800
		Friday, June 19, 2026	815	765

**Island Supply Notes For June 13, 2026**

- I **At 0554 hours, June 13, 2026, Bay d'Espoir Unit 1 unavailable due to forced outage (76.5 MW).**

- Notes:
1. Generation outages for running and corrective maintenance are included. These are not unusual for power system operations. They generally do not impact customer supply. Hydro schedules outages to system equipment whenever possible to coincide with periods when customer demands are low and sufficient supply reserves are available. However, from time to time equipment outages are necessary and reserves may be impacted.
  2. As of 0800 Hours.
  3. Gross continuous unit output.
  4. Gross output from all Island sources (including Note 3).
  5. NLH Island Power Purchases include: ML Imports, Exploits Generation, Rattle Brook, Star Lake, Wind Generation and capacity assistance (when applicable).
  6. Adjusted for interruptible load and the impact of voltage reduction when applicable.
  7. Due to limitations inherent in the design of combustion turbines, the output of combustion turbines may be reduced in the event that ambient temperatures exceed the threshold required for full rated output. This threshold is dependent on the design of each turbine.
  8. Does not include ML Exports.
  9. LIL Import sunk in the Island System. Actual LIL flows will be restricted by various system conditions including, but not limited to, Island Load, ML Exports and Avalon Unit status.

**Section 3  
Island Peak Demand and Exports Information  
Previous Day Actual Peak and Current Day Forecast Peak**

Fri, Jun 12, 2026	Island Peak Demand <sup>10</sup>	9:25	892 MW
	Exports at Peak		237 MW
	LIL Net Imports to Island		2,869 MWh
Sat, Jun 13, 2026	Forecast Island Peak Demand		905 MW

- Notes:
10. Island Demand is supplied by NLH generation and purchases, LIL Imports plus generation owned and operated by Newfoundland Power and Corner Brook Pulp & Paper (Deer Lake Power, DLP).